

Bauart BHDDV-BS

Kombination von zwei mehrteiligen Kupplungsnaven und gerader Bremsscheibe mit Vkr Puffer.w
Einfacher Austausch der elastischen Puffer ohne axiale Verschiebung der gekuppelten Maschinen.
Durch den von der Bremsseite zurückgezogenen Klauenring (Teil 434) und dessen Befestigung
am montierten Klauenring kann die Montage von schweren Antriebskomponenten erleichtert
werden. In diesem Montagezustand der Kupplung ist eine Drehrichtungsprüfung des Elektromotors
möglich.

Sondernaben auch aus Sonderwerkstoffen auf Anfrage.

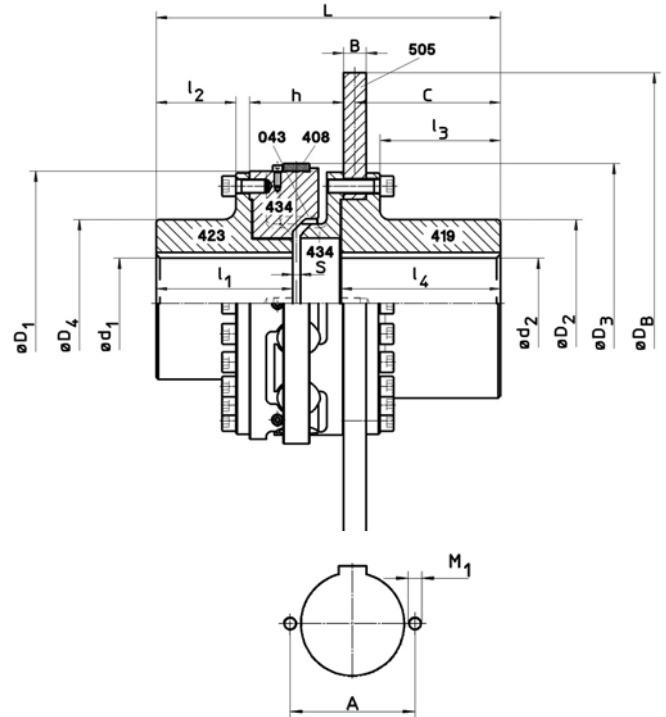
- ¹⁾ Alle Gewichtsangaben für ungebohrte Kupplungen
- ²⁾ Bei Stoßbeanspruchung maximal zulässiges Drehmoment beachten –
siehe Tabelle Datenübersicht
- ³⁾ Mit Nut nach DIN 6885/1 (ISO R 773)

Type BHDDV-BS

Combination of two multi-part design coupling hubs with straight brake disk and Vkr buffer.
Easy replacement of the elastic buffer without axial movement of the coupled machines.
The claw ring on the brake side (part 434) which is fastened to the other fixed claw ring facilitates
assembly of heavy-weight drive components. In this state of assembly of the coupling, the
direction of rotation of the electric motor can be checked.

Customized hubs and special hub materials are available on request.

- ¹⁾ Mass information for unbored coupling parts
- ²⁾ Attention on peak load - take into account maximum torque notified in data overview
- ³⁾ With keyway to DIN 6885/1 (ISO R 773)



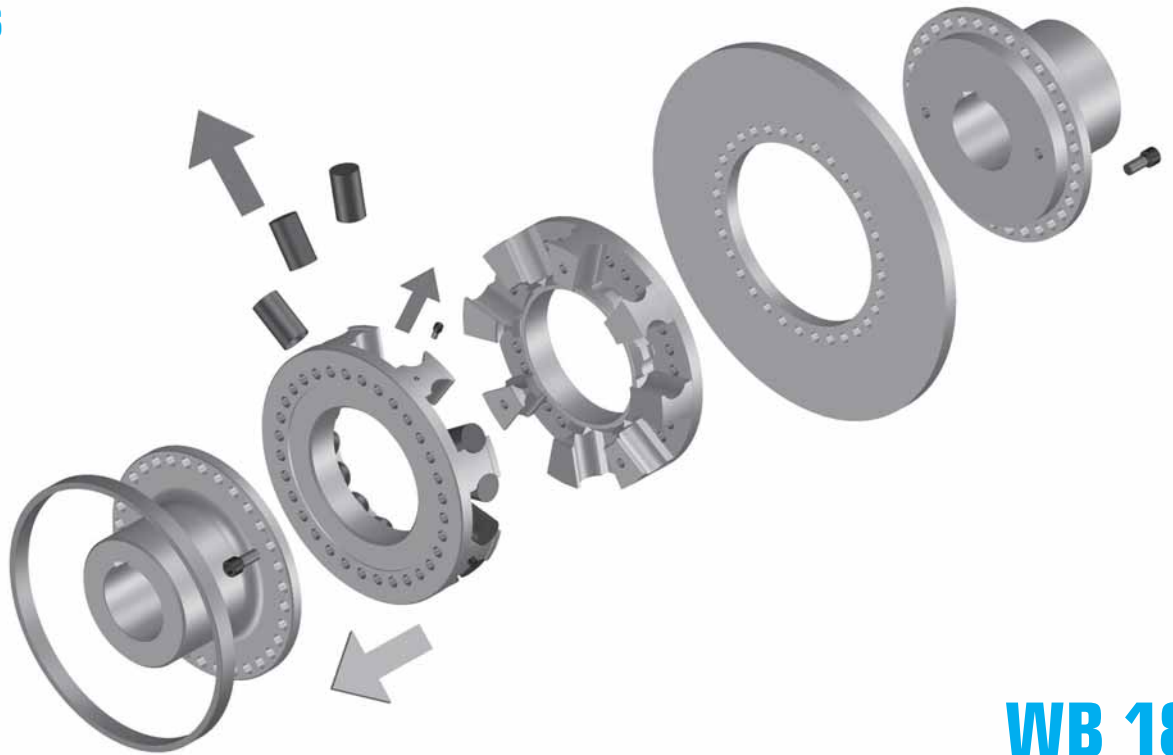
WB 18

Kombination
Combination

BHDDV-BS

| Größe Size | | | TSCHAN B Ident.-Nr. Id.-No. | Nennmoment ²⁾ Nominal torque | Bremsmoment ²⁾ Brake torque | Drehzahl Speed | max. Fertigbohrung max. finished bore | | | | | | | | | | | | | | Masse Mass ¹⁾ | | | |
|----------------|----------------|----|-----------------------------------|--|---|-------------------|---|------------------------------|----------------|----------------|----------------|-----|-----|----------------|----------------|----------------|----------------|----|-----|-----|--------------------------|-----|--|-----------------|
| D ₁ | D _B | B | | T _{KN} | T _{BR} | n _{max.} | d ₁ ³⁾ | d ₂ ³⁾ | D ₂ | D ₃ | D ₄ | h | L | l ₁ | l ₂ | l ₃ | l ₄ | S | C | A | | M1 | Seite Bremsscheibe Side brake disk | Gesamt Total |
| mm | mm | mm | | Nm | Nm | min ⁻¹ | mm | mm | mm | mm | mm | mm | mm | mm | mm | mm | mm | mm | mm | mm | mm | mm | mm | kg |
| 240 | 500 | 30 | WB1824- 500 | 2500 | 7500 | 3500 | 85 | 100 | 150 | 260 | 140 | 104 | 365 | 130 | 68 | 133 | 180 | 10 | 163 | - | 125 | M16 | 79 | 107 |
| 240 | 560 | 30 | WB1824- 560 | 2500 | 7500 | 3000 | 85 | 100 | 150 | 260 | 140 | 104 | 365 | 130 | 68 | 133 | 180 | 10 | 163 | - | 125 | M16 | 91 | 119 |
| 240 | 630 | 30 | WB1824- 630 | 2500 | 7500 | 2700 | 85 | 100 | 150 | 260 | 140 | 104 | 365 | 130 | 68 | 133 | 180 | 10 | 163 | - | 125 | M16 | 106 | 134 |
| 300 | 630 | 30 | WB1830- 630 | 6000 | 18000 | 2700 | 110 | 135 | 200 | 320 | 170 | 124 | 440 | 160 | 85 | 165 | 216 | 10 | 198 | - | 175 | M16 | 142 | 194 |
| 300 | 710 | 30 | WB1830- 710 | 6000 | 18000 | 2400 | 110 | 135 | 200 | 320 | 170 | 124 | 440 | 160 | 85 | 165 | 216 | 10 | 198 | - | 175 | M16 | 162 | 214 |
| 300 | 800 | 30 | WB1830- 800 | 6000 | 18000 | 2150 | 110 | 135 | 200 | 320 | 170 | 124 | 440 | 160 | 85 | 165 | 216 | 10 | 198 | - | 175 | M16 | 187 | 239 |
| 350 | 630 | 30 | WB1835- 630 | 10500 | 31500 | 2700 | 120 | 170 | 250 | 370 | 180 | 124 | 505 | 180 | 105 | 210 | 261 | 10 | 243 | 145 | 220 | M16 | 190 | 260 |
| 350 | 710 | 30 | WB1835- 710 | 10500 | 31500 | 2400 | 120 | 170 | 250 | 370 | 180 | 124 | 505 | 180 | 105 | 210 | 261 | 10 | 243 | 145 | 220 | M16 | 210 | 280 |
| 350 | 800 | 30 | WB1835- 800 | 10500 | 31500 | 2150 | 120 | 170 | 250 | 370 | 180 | 124 | 505 | 180 | 105 | 210 | 261 | 10 | 243 | 145 | 220 | M16 | 235 | 305 |
| 400 | 630 | 30 | WB1840- 630 | 16000 | 48000 | 2450 | 140 | 190 | 280 | 420 | 210 | 138 | 530 | 190 | 106 | 216 | 269 | 10 | 251 | 170 | 245 | M20 | 231 | 334 |
| 400 | 710 | 30 | WB1840- 710 | 16000 | 48000 | 2400 | 140 | 190 | 280 | 420 | 210 | 138 | 530 | 190 | 106 | 216 | 269 | 10 | 251 | 170 | 245 | M20 | 251 | 354 |
| 400 | 800 | 30 | WB1840- 800 | 16000 | 48000 | 2150 | 140 | 190 | 280 | 420 | 210 | 138 | 530 | 190 | 106 | 216 | 269 | 10 | 251 | 170 | 245 | M20 | 276 | 379 |
| 450 | 710 | 30 | WB1845- 710 | 21000 | 63000 | 2200 | 170 | 205 | 300 | 470 | 250 | 138 | 540 | 200 | 116 | 216 | 269 | 10 | 251 | 210 | 265 | M20 | 274 | 408 |
| 450 | 800 | 30 | WB1845- 800 | 21000 | 63000 | 2150 | 170 | 205 | 300 | 470 | 250 | 138 | 540 | 200 | 116 | 216 | 269 | 10 | 251 | 210 | 265 | M20 | 299 | 433 |
| 450 | 900 | 30 | WB1845- 900 | 21000 | 63000 | 1900 | 170 | 205 | 300 | 470 | 250 | 138 | 540 | 200 | 116 | 216 | 269 | 10 | 251 | 210 | 265 | M20 | 330 | 464 |

TSCHAN BHDDV-BS



WB 18

BHDDV-BS Kombination
Combination

| Größe Size | | | TSCHAN B Ident.-Nr. Id.-No. | Nennmoment ²⁾ Nominal torque | Bremsmoment ¹⁾ Brake torque | Drehzahl Speed | max. Fertigbohrung max. finished bore | | | | | | | | | | | | | | | | Masse Mass ¹⁾ | |
|------------|-------|-----|-----------------------------------|--|---|-------------------|---|------------|-------|-------|-------|-----|-----|-------|-------|-------|-------|-----|-----|-----|------|---|--------------------------|------|
| D_1 | D_B | B | | T_{KN} | T_{BR} | | $d_1^{3)}$ | $d_2^{3)}$ | D_2 | D_3 | D_4 | h | L | l_1 | l_2 | l_3 | l_4 | S | C | A | $M1$ | Seite Brems Scheibe Side brake disk | Gesamt Total | |
| mm | mm | mm | | VkR | | n_{max} | mm | mm | mm | mm | mm | mm | mm | mm | mm | mm | mm | mm | mm | mm | mm | kg | kg | |
| | | | | Nm | Nm | min ⁻¹ | | | | | | | | | | | | | | | | | | |
| 500 | 800 | 30 | WB1850- 800 | 28500 | 85500 | 2000 | 180 | 225 | 330 | 530 | 270 | 160 | 620 | 228 | 130 | 250 | 309 | 14 | 290 | 215 | 290 | M24 | 381 | 572 |
| 500 | 900 | 30 | WB1850- 900 | 28500 | 85500 | 1900 | 180 | 225 | 330 | 530 | 270 | 160 | 620 | 228 | 130 | 250 | 309 | 14 | 290 | 215 | 290 | M24 | 412 | 603 |
| 500 | 1000 | 30 | WB1850-1000 | 28500 | 85500 | 1650 | 180 | 225 | 330 | 530 | 270 | 160 | 620 | 228 | 130 | 250 | 309 | 14 | 290 | 215 | 290 | M24 | 448 | 639 |
| 550 | 800 | 30 | WB1855- 800 | 45000 | 135000 | 1800 | 200 | 240 | 350 | 580 | 280 | 160 | 620 | 228 | 130 | 250 | 309 | 14 | 290 | 245 | 310 | M24 | 419 | 639 |
| 550 | 900 | 30 | WB1855- 900 | 45000 | 135000 | 1800 | 200 | 240 | 350 | 580 | 280 | 160 | 620 | 228 | 130 | 250 | 309 | 14 | 290 | 245 | 310 | M24 | 450 | 670 |
| 600 | 900 | 30 | WB1860- 900 | 55000 | 165000 | 1650 | 235 | 265 | 385 | 630 | 330 | 170 | 675 | 258 | 155 | 270 | 329 | 14 | 310 | 290 | 340 | M24 | 535 | 838 |
| 600 | 1000 | 30 | WB1860-1000 | 55000 | 165000 | 1650 | 235 | 265 | 385 | 630 | 330 | 170 | 675 | 258 | 155 | 270 | 329 | 14 | 310 | 290 | 340 | M24 | 570 | 873 |
| 650 | 900 | 30 | WB1865- 900 | 65000 | 195000 | 1500 | 250 | 265 | 385 | 680 | 350 | 182 | 680 | 258 | 146 | 266 | 329 | 14 | 309 | 310 | 340 | M27 | 559 | 909 |
| 650 | 1000 | 30 | WB1865-1000 | 65000 | 195000 | 1500 | 250 | 265 | 385 | 680 | 350 | 182 | 680 | 258 | 146 | 266 | 329 | 14 | 309 | 310 | 340 | M27 | 594 | 944 |
| 700 | 1000 | 30 | WB1870-1000 | 90000 | 270000 | 1400 | 260 | 310 | 450 | 740 | 370 | 200 | 775 | 298 | 175 | 310 | 375 | 14 | 355 | 315 | 400 | M30 | 795 | 1260 |
| 700 | 1400 | 30 | WB1870-1400 | 90000 | 270000 | 1200 | 260 | 310 | 450 | 740 | 370 | 200 | 775 | 298 | 175 | 310 | 375 | 14 | 355 | 315 | 400 | M30 | 973 | 1438 |
| 800 | 1200 | 30 | WB1880-1200 | 125000 | 375000 | 1200 | 320 | 340 | 490 | 840 | 450 | 200 | 835 | 338 | 215 | 330 | 395 | 14 | 375 | 380 | 440 | M30 | 1040 | 1726 |
| 800 | 1400 | 30 | WB1880-1400 | 125000 | 375000 | 1200 | 320 | 340 | 490 | 840 | 450 | 200 | 835 | 338 | 215 | 330 | 395 | 14 | 375 | 380 | 440 | M30 | 1136 | 1822 |
| 900 | 1400 | 30 | WB1890-1400 | 180000 | 540000 | 1100 | 340 | 400 | 590 | 940 | 480 | 214 | 875 | 338 | 203 | 358 | 429 | 14 | 408 | 400 | 540 | M30 | 1498 | 2310 |
| 900 | 1500 | 30 | WB1890-1500 | 180000 | 540000 | 1100 | 340 | 400 | 590 | 940 | 480 | 214 | 875 | 338 | 203 | 358 | 429 | 14 | 408 | 400 | 540 | M30 | 1552 | 2364 |